

16-17 May 2024

# RE-DWELL Conference

## Sustainable Living, Affordable Homes: Meeting the Challenge Together

**School of Architecture La Salle  
Ramon Llull University**

C/ de Sant Joan de la Salle, 42  
08022 Barcelona  
Spain



RE-DWELL "Delivering affordable and sustainable housing in Europe" has received funding from the European Union's Horizon 2020 research and innovation programme under the Marie Skłodowska-Curie grant agreement No 956082

<b>About the conference</b>	<b>4</b>
<b>Programme</b>	<b>6</b>
<b>Participants</b>	<b>34</b>
<b>Practical information</b>	<b>42</b>
<b>Submissions</b>	<b>50</b>

## About the conference

This is the end-of-award conference organized by the network following the one held in Grenoble in December 2022. The goal of this conference is to showcase the work done by the network and to engage with external participants from academia, policy, and practice.

The conference provides a a space to discuss present-day issues and future visions regarding the societal challenge of providing sustainable and affordable housing in Europe.



# Programme



- > Timetable
- > Day 1
- > Day 2

The conference programme comprises three interactive sessions, bringing together RE-DWELL members, guest speakers, and external presenters selected through an open call. The topics of each session reflect the research structure adopted by the network, intertwining three areas: design, planning and building; community participation; and policy and financing.

A debate featuring two architectural offices will focus on their efforts to redefine our understanding of housing to meet contemporary needs, while also reshaping the role of architects in the pursuit of providing affordable and sustainable housing.

A keynote speech will explore prevailing views on the fragility of social rented housing systems since the 1980s, emphasizing their resilience in certain countries. The analysis will concentrate on internal political and economic factors within these systems, including finance, land acquisition, provider organizations, and tenants.

The closing session will introduce the RE-DWELL transdisciplinary research framework for affordable and sustainable housing, developed through collaborative work involving network members, including early-stage researchers, supervisors, and partner organizations. Participants will engage in a hands-on session, applying the framework components to specific problem cases.

# Timetable

## Day 0

Wednesday, 15 May 2024

8:30-14:30      Site visits

## Day 1

Thursday, 16 May 2024

Auditorium	9:00-9:15	Opening and welcome
	9:15-10:30	RE-DWELL introduction
Congress Hall	10:30-11:00	Coffee break
	11:00 -13:00	Parallel interactive sessions
	13:00 - 14:00	Lunch break
Auditorium	14:00-15:30	Wrap-up session
	15:30-16:00	Coffee break
	16:00-18:00	Debate: “Re-thinking dwelling, Re-imagining housing”
Congress Hall	18:00-19:00	RE-DWELL exhibition
	20:30	Social dinner

## Day 2

Friday, 17 May 2024

Auditorium	9:00-9:15	Welcome
	9:15-10:00	Keynote speech: “Resilience and fragility in social housing systems”
	10:00-10:30	Discussion
Congress Hall	10:30-11:00	Coffee break + poster section
	11:00-13:00	RE-DWELL Framework
	13:00-13:15	Closure
	13:15-14:00	Lunch

**Day 0**

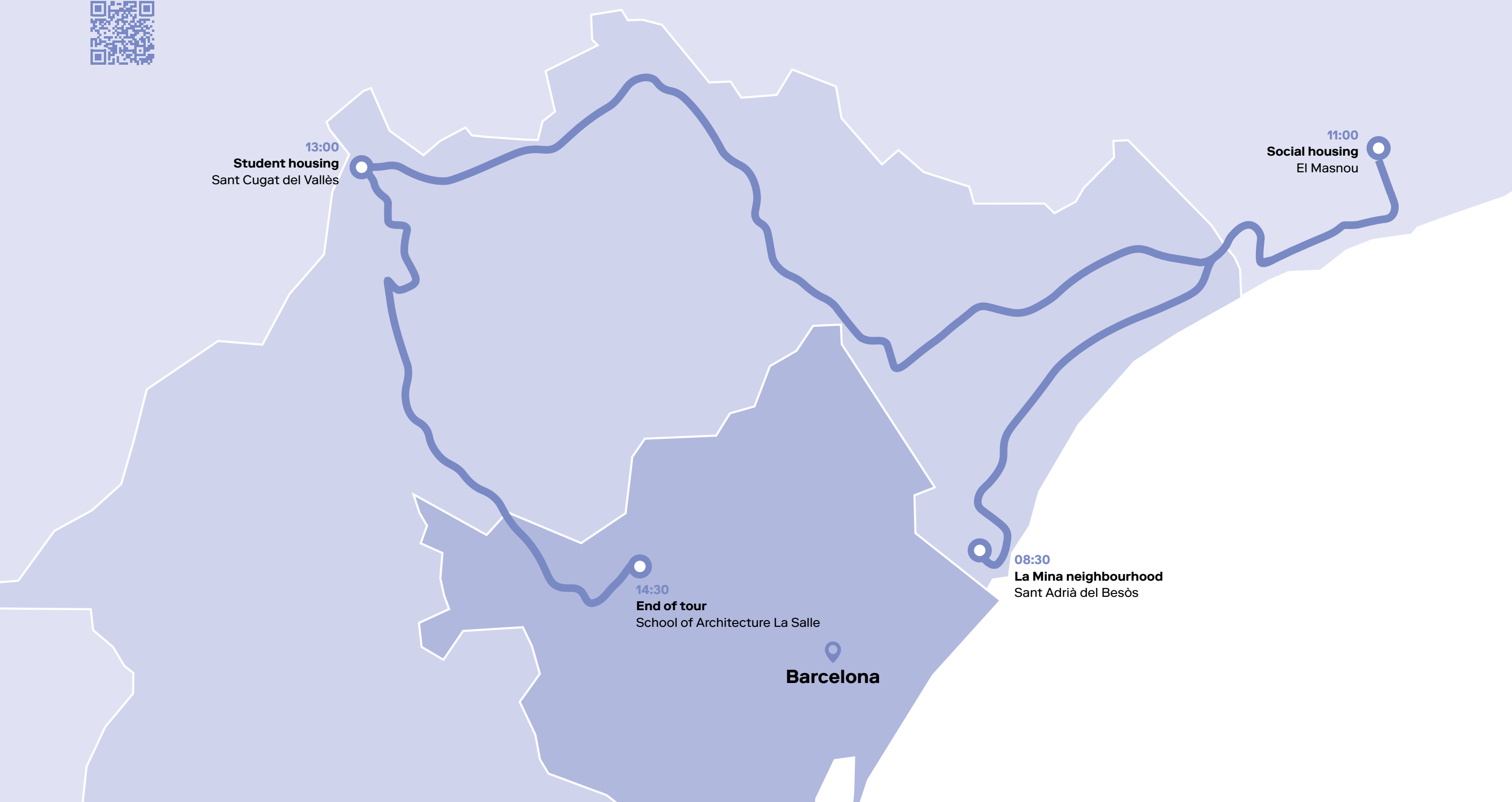
**Wednesday,  
15 May 2024**

> Site visits

# Site visits

Wednesday, 15 May 2024

Meeting point:  
8:30 At the corner of San Raimundo  
de Peñafort and Ferrer Bassa,  
Sant Adrià de Besòs, Barcelona





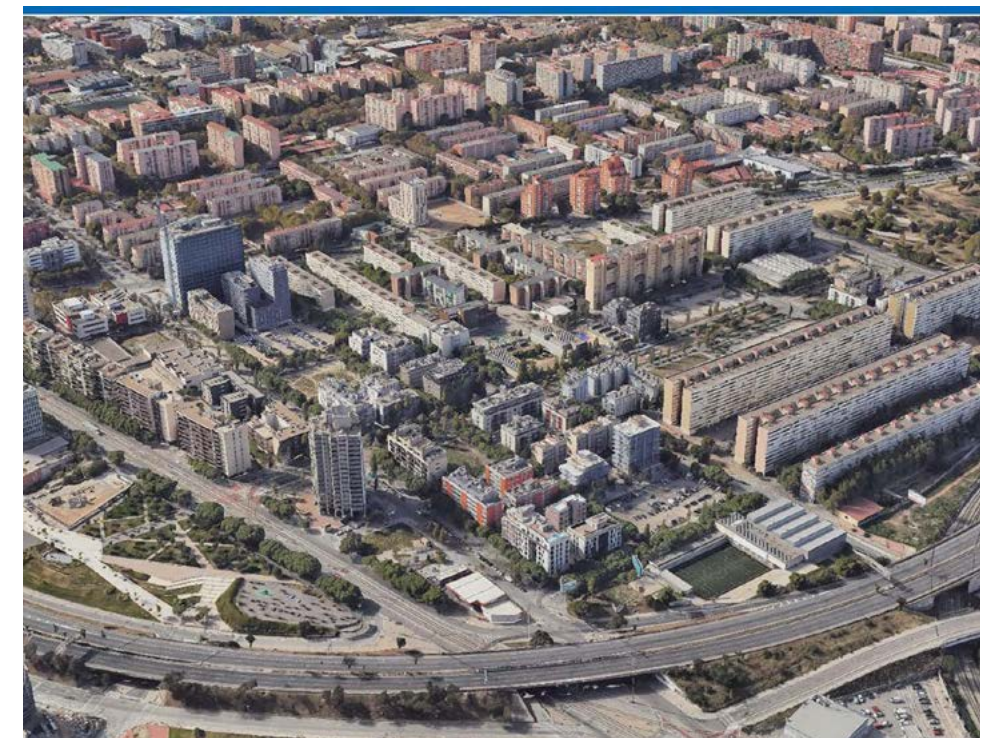
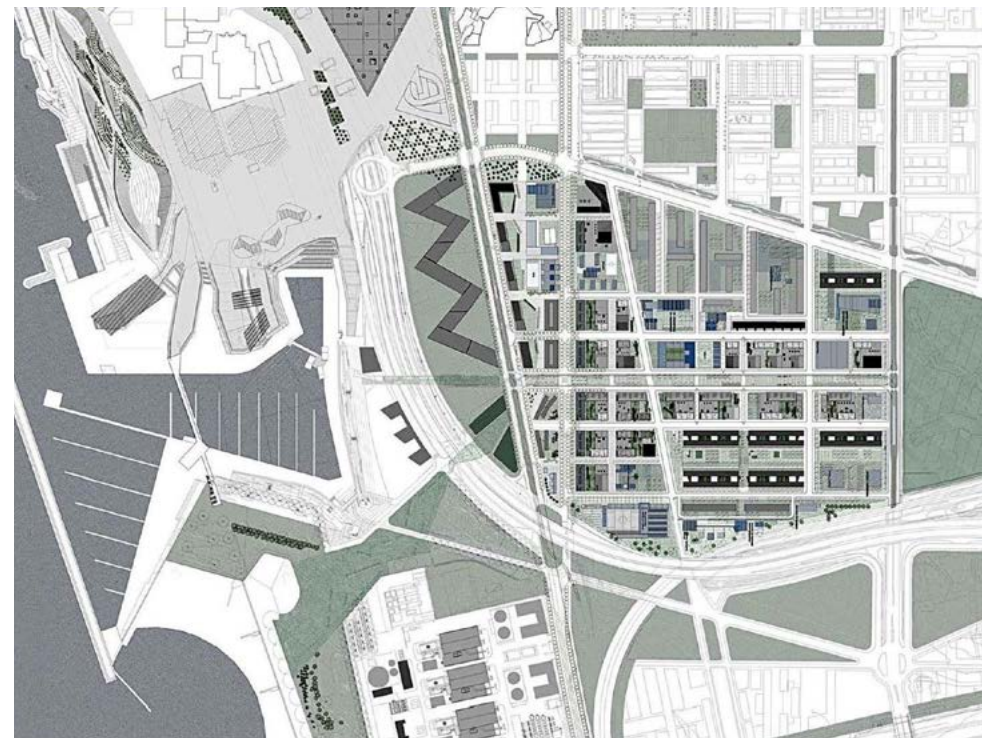
# Urban regeneration

## La Mina neighbourhood Sant Adrià del Bèsos (Barcelona)

**Facilitator:** Pere Picorelli (Incàsòl)

The La Mina neighborhood in Sant Adrià de Besòs, Barcelona, originated in the 1960s as part of a large-scale housing project to accommodate immigrant workers during an economic boom. Its name comes from pre-existing coal mines. Initially conceived as social housing, it later faced challenges of marginalization, poverty, and crime due to inadequate urban planning and lack of services. Rehabilitation efforts have since aimed to revitalize the area and improve living conditions, though social integration and community development remain ongoing challenges. Intervention by Incasòl has alleviated some issues, improving quality of life. Despite past mistrust, various attempts at transformation have been made over the last thirty years, from partial to total demolition, reflecting the complex history of the neighborhood.

The Transformation Plan for the La Mina neighborhood in Sant Adrià de Besòs began in 2004. This plan was an initiative of local and regional administrations aimed at revitalizing and improving living conditions in the neighborhood by addressing urban, social, and economic issues. The plan included measures for urban renewal, infrastructure improvement, promotion of cultural and sports activities, as well as actions to promote social integration and community development in La Mina.



More information:



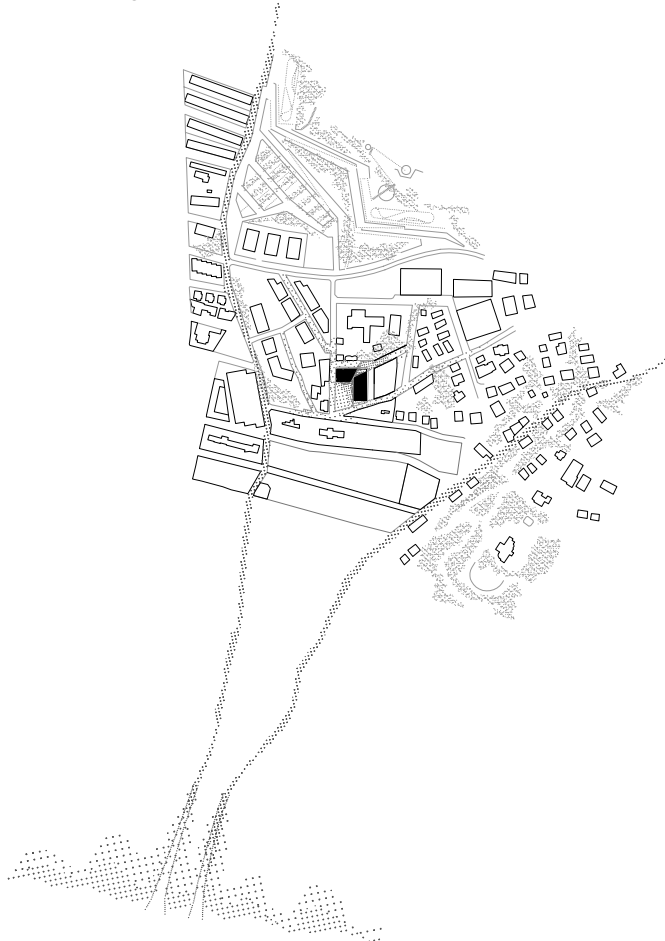


# Social housing

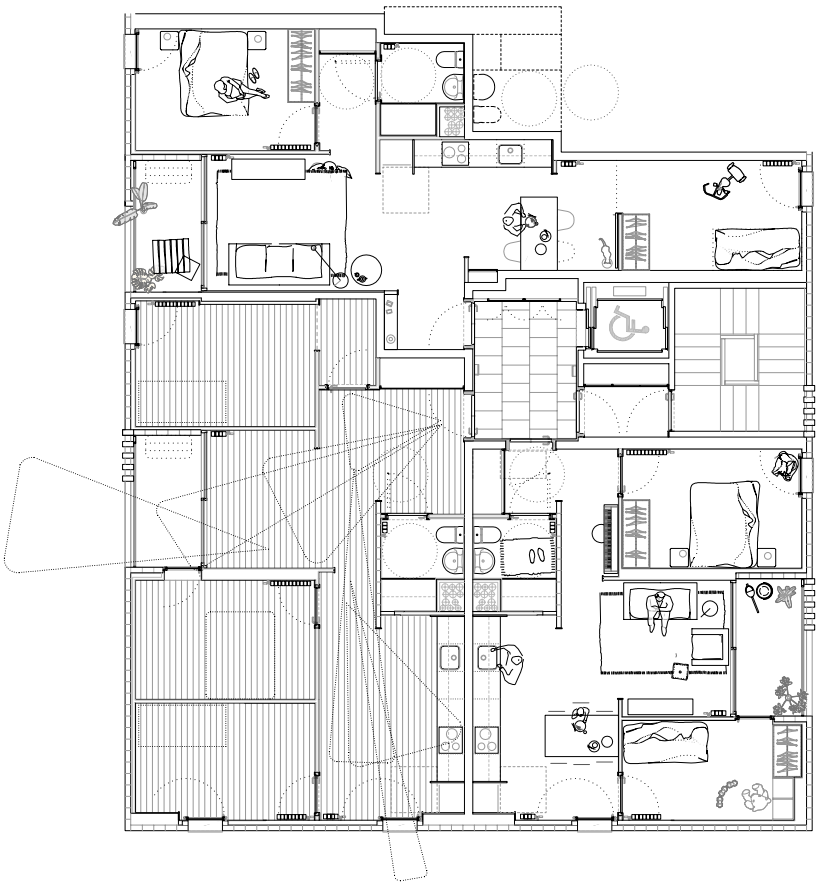
**Peris+Toral Arquitectes**  
Plaça U d'octubre 2, El Masnou (Barcelona)

**Facilitator:** José Toral (Peris+Toral)

The complex is made up of three aggregation units of three and four dwellings per landing, optimising the vertical cores and circulations, with a total of 40 units. All the dwellings have double orientation and cross ventilation through the living room, and all the rooms are double and 10 m2. The corner typology allows flexibility and adaptability over time, offering different distributions and ways of living. The terraces incorporate a double enclosure that functions as a thermal cushion and as a collector's gallery at the winter solstice and does not harm the cross ventilation of the dwellings in summer. This is a passive resource to reduce energy demand and guarantee in all cases 1 hour of sunlight between 10am and 2pm during the winter. To favour the thermal inertia of the building, the roof is left exposed.



More information:





# Student housing

## HARQUITECTES+ DATAAE

### Escola Tècnica Superior d'Arquitectura del Vallès

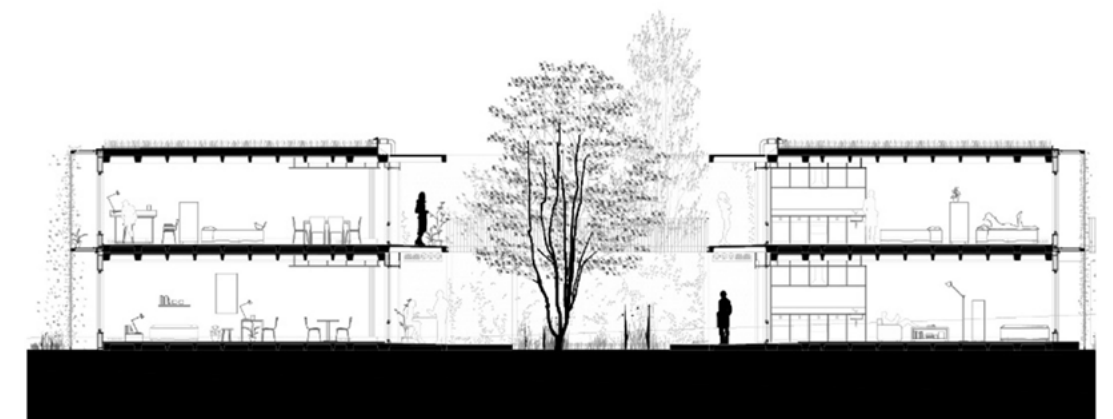
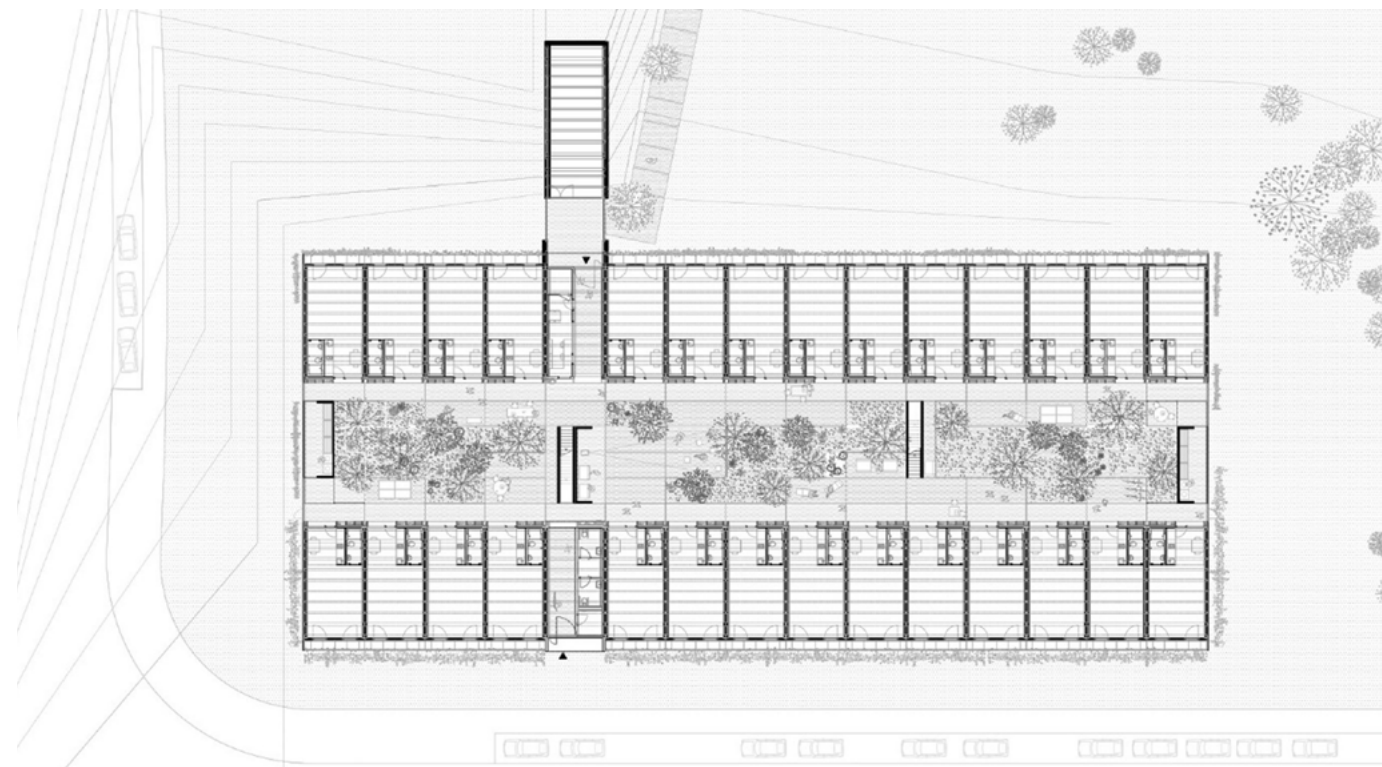
**Facilitator:** Josep Ricart (HArquitectes)

The university housing, designed between 2009-2010 and completed in 2011, is situated on the same plot as the Escuela Técnica Superior de Arquitectura del Vallès (ETSAV) in Sant Cugat del Vallès. It tackled three primary challenges: providing habitable spaces for architecture students, meeting Swiss Minergie energy certification standards (under 38 kwh/m2a), and employing a new industrialized construction system (EMI system by Compact Habit).

The building's positioning aimed to maintain balance with existing structures, prioritize direct connections between dwellings and campus, and encourage outdoor use with accessible routes. Its design utilizes the existing topography, featuring a central courtyard for communal activities, offering 1000m2 of shared spaces. The program fosters both individual and collective interaction among students, leveraging flexible dwelling interiors and the courtyard for social events.



More information:



# Day 1

Thursday,  
16 May 2024

- > Interactive sessions
- > Debate

## Interactive sessions

11:00-13:00 · Congress Hall

### Session 1. Reimagining housing: Innovative designs for thriving communities

#### Agora Room

Innovation in the design, planning, and construction of housing, whether through new builds or retrofits, is a critical area closely intertwined with affordable and sustainable housing provisions. The innovation discourse intersects with a variety of topics, ranging from practical applications to research methods and pedagogical approaches. Despite its centrality in addressing the housing crisis, the discourse on innovation in housing has evolved into a complex techno-centric narrative. The aim of this session is, therefore, to stimulate collaborative and productive dialogue, shedding light on overlooked issues related to long-term sustainability and responsiveness to local needs. It also aims to highlight the central role of innovation in addressing the challenges associated with developing sustainable, affordable, accessible, and community-oriented housing solutions for thriving communities.

#### Moderated by:

Mahmoud Alsaeed (Sheffield School of Architecture), Aya Elghandour (Sheffield School of Architecture) and Leonardo Ricaurte (University of Reading)

#### Participants:

- Eira Capelán (South Yorkshire Housing Association)
- Saskia Furman (School of Architecture La Salle)
- Noémi Gyárfás (Budapest University of Technology and Economics)
- Aboli Mangire (HafenCity University Hamburg)
- Bruno Saurer (Green Building Council Spain)
- Elanor Warwick (Clarion Housing Association)

**Session 2. Fostering sustainable living: Empowering communities for inclusivity and resilience**

**Congress Hall A**

This session focuses on the implications of community participation in (i) urbanisation processes and social infrastructure, (ii) alternative housing models and (iii) housing provision, in shaping sustainable and equitable housing and urban living solutions. The session aims to discuss alternative responses to increased financialization and speculation in housing and urban development, which perpetuate inequalities. It covers a wide range of contexts, including temporary settlements, degrowth approaches, neighbourhood planning, integrated district renovation projects, community-led, circular and cooperative housing, social housing developments and retrofitting. By delving into these themes, the session welcomes diverse perspectives from academics, social housing providers, civil society organizations, non-profit entities, European-level federations, and others. It emphasizes contemporary multidimensional and multisectoral mechanisms and challenges of community participation, focusing on inclusivity, collaborative governance, processes, effects of innovation, scaling-up, and replication, among others.

**Participants:**

- Josep Maria Borrell (Impsol)
- Margaux Lespagnard (Vrije Universiteit Brussel)
- Margheritta Marinelli (Housing Europe)
- Andreas Panagidis (University of Cyprus)
- Newsha Salari (School of Architecture La Salle)
- Ana Vaz Milheiro (ISCTE-UL)
- Angelos Varvarousis (Autonomous University of Barcelona)

**Moderated by:**

Lucia Chaloin (Université Grenoble Alpes), Androniki Pappa (ISCTE-UL) and Zoe Tzika (School of Architecture, Technical University of Valencia)

**Session 3. Reconsidering regulatory frameworks: Policies and financing for affordable and sustainable housing**

**Congress Hall B**

The interplay between policy and financing mechanisms is essential for creating an enabling environment that supports the development of sustainable and affordable housing solutions, addressing both social and environmental objectives. This entails navigating the balance between two occasionally opposing aims: affordability and sustainability—concepts open to debate and requiring contextual understanding within local settings. In this session, we will discuss how fiscal policies and legal frameworks can foster housing regimes that promote environmental justice at various levels—national, regional, and local. We will also examine the importance of green and public investments, not only for encouraging the construction of new affordable and sustainable homes but also for facilitating the retrofitting of existing housing stock. Lastly, we will underscore the importance of implementing effective social policies to assist disadvantaged households as society grapples with challenges arising from energy, climate, and housing crises.

**Participants:**

- Adirane Calvo (School of Architecture La Salle)
- Gábor Csanádi (Faculty of Social Sciences, ELTE)
- Charalambos Iacovou (Cyprus Land Development Corporation)
- Jordi Serrano-Codina (Incàsol)
- Ana Zadelj (Ceraneo)

**Moderated by:**

Tijn Croon (TU Delft) and Marko Horvat (Institute for Social Policy, University of Zagreb)

**14:00-15:30 · Auditorium**

**Wrap-up session**

A representative from each interactive session presents a summary, followed by a debate.



# Debate

16:00-18:00 · Auditorium

## Re-thinking dwelling, re-imagining housing

**Josep Ricart** (HArquitectes)

**José Toral** (Peris+Torral)

The solution to the lack of affordable housing for increasingly large segments of the population in many countries demands the active engagement of all stakeholders involved in housing provision, whether private or public, working independently or collaboratively. While the immediate priority is to ensure access to housing for those unable to afford it, the underlying challenge extends further: it is necessary a fundamental reimagining of how we conceptualize, build, and inhabit our homes and cities, integrating sustainability principles throughout every stage of the process.

Providing housing which is both affordable and sustainable is a multifaceted endeavor that necessitates the participation of public authorities, private investors, professionals from various disciplines, and citizens alike. Within this context, architects occupy a pivotal role, as they have both an opportunity and an imperative to contribute to addressing this societal need. It is not merely about providing housing “solutions”, but rather about rethinking dwelling, and reimagining housing in the light of the contemporary challenges, such as rapid urbanization, resource scarcity, and climate change.

In this session we will focus on the contributions and role of architects in the contemporary quest for affordable and sustainable housing. Within this context, architects have an opportunity to reevaluate traditional housing models, embracing sustainable practices that balance affordability with environmental considerations, while also focusing on the comfort and quality of living spaces tailored to the needs of contemporary inhabitants.

The housing projects undertaken in recent years by **HArquitectes** and **Peris+Torral** exemplify the architects’ ongoing efforts to redefine our understanding of housing to meet contemporary needs, while simultaneously reshaping the role of the architect in the pursuit of providing affordable and sustainable housing. Throughout their projects, a dialectic between concepts that necessitate redefinition in light of current sustainability concerns emerges: **tradition and innovation, materiality and immateriality, intimacy and community, and nature and artifice.**

During this session, each architectural office will showcase their respective approaches, drawing from their practice and research. Following the presentations, there will be a moderated dialogue with the audience, fostering a dynamic exchange of ideas and insights.

# Day 2

Friday,  
17 May 2024

**Moderated by:**  
Leandro Madrazo (La Salle-URL)

**Streaming:**  
<https://esdeveniments.salle.url.edu/esdeveniment/144>

- > Keynote
- > RE-DWELL Framework
- > Exhibition

# Keynote

9:15-10:30 · Auditorium

## Resilience and fragility in social housing systems

### Michelle Norris

Director of the Geary Institute for Public Policy and Professor of Social Policy, University College Dublin, Ireland

### Moderated by:

Marja Elsinga (TU Delft)

### Streaming:

<https://esdeveniments.salle.url.edu/esdeveniment/145>

The literature on the trajectories of social rented housing systems since the 1980s emphasises their fragility, as evidenced by the tendency to contract and residualise, and relates this primarily to macro level political economy factors, such as the tenures' role in the housing market and economy, in resolving social and economic crises and the political support it receives. This paper adopts a different approach. Rather than focussing solely on the fragility of social housing systems, it examines the significant levels of resilience that have persisted and tries to clarify why this tenure has proved to be resilient in some countries, but fragile in others. Rather than concentrating on the role which macro political economy factors, primarily external to social housing systems play in shaping this resilience and fragility, this paper focuses instead on the influence of political and economic factors which are primarily internal to these systems. This analysis of the micro-political economy of social housing focuses on four factors: finance, land acquisition, provider organisations and tenants.



# RE-DWELL Framework

11:00-13:00 · Congress Hall

## Presentation of the framework

**Marja Elsinga (TU Delft), Leandro Madrazo (La Salle-URL)**

Transdisciplinary research addresses real-world issues by collaborating with diverse stakeholders to develop solutions that transcend disciplinary boundaries. It breaks down academic silos and fosters partnerships among experts from various fields, as well as involving non-expert stakeholders.

Addressing the urgent societal need for affordable and sustainable housing requires collaboration across research and practice domains. Clear objectives and scope must be defined collaboratively by all involved actors. This cooperation may extend throughout the entire housing project lifecycle, encompassing design, construction, operation, and even dismantling phases.

The RE-DWELL transdisciplinary research framework for affordable and sustainable housing has been developed through collaborative research involving network members, including early-stage researchers, supervisors, and partner organizations. It serves to guide stakeholders involved in affordable and sustainable housing projects, helping

## Interactive session with participants

**Facilitated by: Alexandra Paio (ISCTE-UL)**

The RE-DWELL framework is being applied in diverse settings involving researchers, partner organizations, and non-experts. In these implementations, the framework components are tailored to the specific objectives of a group of stakeholders dealing with a specific affordable and sustainable project. The ultimate objective is to help stakeholders define the problems at stake and explore potential solutions collaboratively. Through this process, all participants engage in a mutual learning experience, gaining insights from each other's perspectives and expertise. Ultimately, the aim is to devise strategies for real-world transformation, particularly in facilitating the production of affordable housing for those in need while also addressing sustainability requirements.

# Exhibition

The exhibition features the collective work conducted by the RE-DWELL network over the past three years and the posters submitted by outside contributors (see “Submissions”).

# Participants



- > Guest speakers
- > Attendees

## Guest speakers

**Josep Ricart Ulldemolins** earned his degree in Architecture from the Escola Tècnica Superior d'Arquitectura del Vallès (ETSAV) with the highest honors. Since 2006, he has been teaching Projects at ETSAV, and since 2012, at the Master Course on Production of Spaces at the Polytechnic University of Catalonia (UPC). Alongside David Lorente Ibáñez, Xavier Ros Majó, and Roger Tudó Galí, he is a partner at HARquitectes, an architecture studio established in 2000 and located in Sabadell, Barcelona. Their work has garnered recognition and awards for both constructed projects and conceptual designs, with a particular emphasis on housing at various scales and contexts. These projects have been featured in numerous national and international publications, selected for various exhibitions, and the studio members have been invited as speakers to events across Europe and America.

**José Toral** graduated from the Escola Tècnica Superior d'Arquitectura de Barcelona (ETSAB) in 2003. In 2005, he co-founded the studio peris+toral.arquitectes in Barcelona with Marta Peris. Their built work primarily focuses on collective public housing and urban space. Currently, they are involved in several ongoing residential and public projects while also teaching at the ETSAB and the IED. Their projects have been featured in national and international publications and showcased at events such as the UIA Tokyo 2011, Paris 2009, and the Venice Biennale 2000. In the realm of theory, the studio has contributed articles to publications like Arquitectura COAM, Ed. Fundamentos, and DC Papers. Their work has received recognition through various awards, including the AJAC Joves Arquitectes 2011 Award, FAD 2009 Finalist, Saloni d'Arquitectura 2009 Finalist, Construmat 2015 Mention, COAVN Award, and UIA 96 Award, among others. Their social housing project in Gavà, in particular, has received numerous awards and was a finalist for the Mies van der Rohe Award in 2022.

**Michelle Norris** is Geary Institute for Public Policy Director and Professor of Social Policy, specializing in housing policy and urban regeneration. Research areas include social housing management, estate regeneration, European housing provision comparison, and Irish housing policy history. Currently leading research projects, with 170+ publications and a 2016 book on Irish welfare state implications. Key roles include advisory positions for leading housing journals, co-convenor of the European Network for Housing Research Working Group, and active involvement in policy-making, such as chairing the Housing Finance Agency and contributing to the Land Development Agency. Recognized with UCD's 2017 research impact award. In 2020, appointed as an expert advisor to the Housing 2030 project, addressing housing affordability and sustainability policies globally. Acknowledged with UCD's 2015 and Irish Research Council's 2021 research impact awards for impactful policy contributions.

# Attendees

<b>Mahmoud Alsaeed</b>	Sheffield School of Architecture	<i>United Kingdom</i>
<b>João Boavida</b>	ISCTE-University Institute of Lisbon	<i>Portugal</i>
<b>Gojko Bezovan</b>	Institute for Social Policy-ISP, University of Zagreb	<i>Croatia</i>
<b>Josep Maria Borrell</b>	Impsol	<i>Spain</i>
<b>Adirane Calvo</b>	La Salle School of Architecture, Barcelona	<i>Spain</i>
<b>Eira Capelman</b>	South Yorkshire Housing Association	<i>United Kingdom</i>
<b>Lucia Chaloin</b>	Université Grenoble Alpes	<i>France</i>
<b>Nadia Charalambous</b>	University of Cyprus	<i>Cyprus</i>
<b>Tijn Croon</b>	TU Delft	<i>Netherlands</i>
<b>Gábor Csanádi</b>	Faculty of Social Sciences, ELTE	<i>Hungary</i>
<b>Adrienne Csizmady</b>	Institute for Sociology, Centre for Social Sciences	<i>Hungary</i>
<b>Adriana Diaconu</b>	Université Grenoble Alpes	<i>France</i>
<b>Marja Elsinga</b>	TU Delft	<i>Netherlands</i>
<b>Ebru Erdogan</b>	Selcuk University	<i>Turkey</i>
<b>Hacı Abdullah Erdogan</b>	Konya Technical University	<i>Turkey</i>

<b>Lorraine Farrelly</b>	York School of Architecture	<i>United Kingdom</i>
<b>Saskia Furman</b>	La Salle School of Architecture, Barcelona	<i>Spain</i>
<b>Ignacio Gullén</b>	School of Architecture, Technical University of Valencia	<i>Spain</i>
<b>Noémi Gyárfás</b>	Budapest University of Technology and Economics	<i>Hungary</i>
<b>Karim Hadjri</b>	Sheffield School of Architecture	<i>United Kingdom</i>
<b>Marko Horvat</b>	Institute for Social Policy-ISP, University of Zagreb	<i>Croatia</i>
<b>Charalambos Iacovou</b>	Cyprus Land Development Corporation	<i>Cyprus</i>
<b>Lorenzo Stefano Iannizzotto</b>	ISCTE-University Institute of Lisbon	<i>Portugal</i>
<b>Fabio Lepratto</b>	Politecnico di Milano	<i>Italy</i>
<b>Margaux Lespagnard</b>	Vrije Universiteit Brussel	<i>Belgium</i>
<b>Leandro Madrazo</b>	La Salle School of Architecture, Barcelona	<i>Spain</i>
<b>Aboli Mangire</b>	HafenCity University Hamburg	<i>Germany</i>
<b>Margherita Marinelli</b>	Housing Europe	<i>Belgium</i>
<b>Núria Martí</b>	La Salle School of Architecture, Barcelona	<i>Spain</i>
<b>Anna Martín</b>	Institute for Sociology, Centre for Social Sciences	<i>Hungary</i>

<b>Carolina Martín</b>	ISCTE-University Institute of Lisbon	<i>Lisbon</i>
<b>Giuliana Miglierina</b>	Politecnico di Milano	<i>Italy</i>
<b>Krzysztof Nawrotek</b>	Sheffield School of Architecture	<i>United Kingdom</i>
<b>Michelle Norris</b>	University College Dublin	<i>Ireland</i>
<b>Alexandra Paio</b>	ISCTE-University Institute of Lisbon	<i>Portugal</i>
<b>Andreas Panagidis</b>	University of Cyprus	<i>Cyprus</i>
<b>Androniki Pappa</b>	ISCTE-University Institute of Lisbon	<i>Portugal</i>
<b>Pere Picorelli</b>	Incàsol	<i>Spain</i>
<b>Leonardo Ricaurte</b>	University of Reading	<i>United Kingdom</i>
<b>Josep Ricart</b>	HArquitectes	<i>Spain</i>
<b>Newsha Salari</b>	La Salle School of Architecture, Barcelona	<i>Spain</i>
<b>Bruno Sauer</b>	Green Building Council	<i>Spain</i>
<b>Carla Sentieri</b>	School of Architecture, Technical University of Valencia	<i>Spain</i>
<b>Jordi Serrano-Codina</b>	Incàsol	<i>Spain</i>

<b>José Toral</b>	Peris+Torral	<i>Spain</i>
<b>Zoe Tzika</b>	School of Architecture, Technical University of Valencia	<i>Spain</i>
<b>Angelos Varvarousis</b>	Autonomus University of Barcelona	<i>Spain</i>
<b>Ana Vaz Milheiro</b>	ISCTE-University Institute of Lisbon	<i>Portugal</i>
<b>Elanor Warwick</b>	Clarion Housing Group	<i>United Kingdom</i>
<b>Ana Zadelj</b>	Ceraneo	<i>Croatia</i>

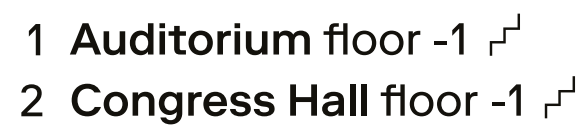


## Practical information

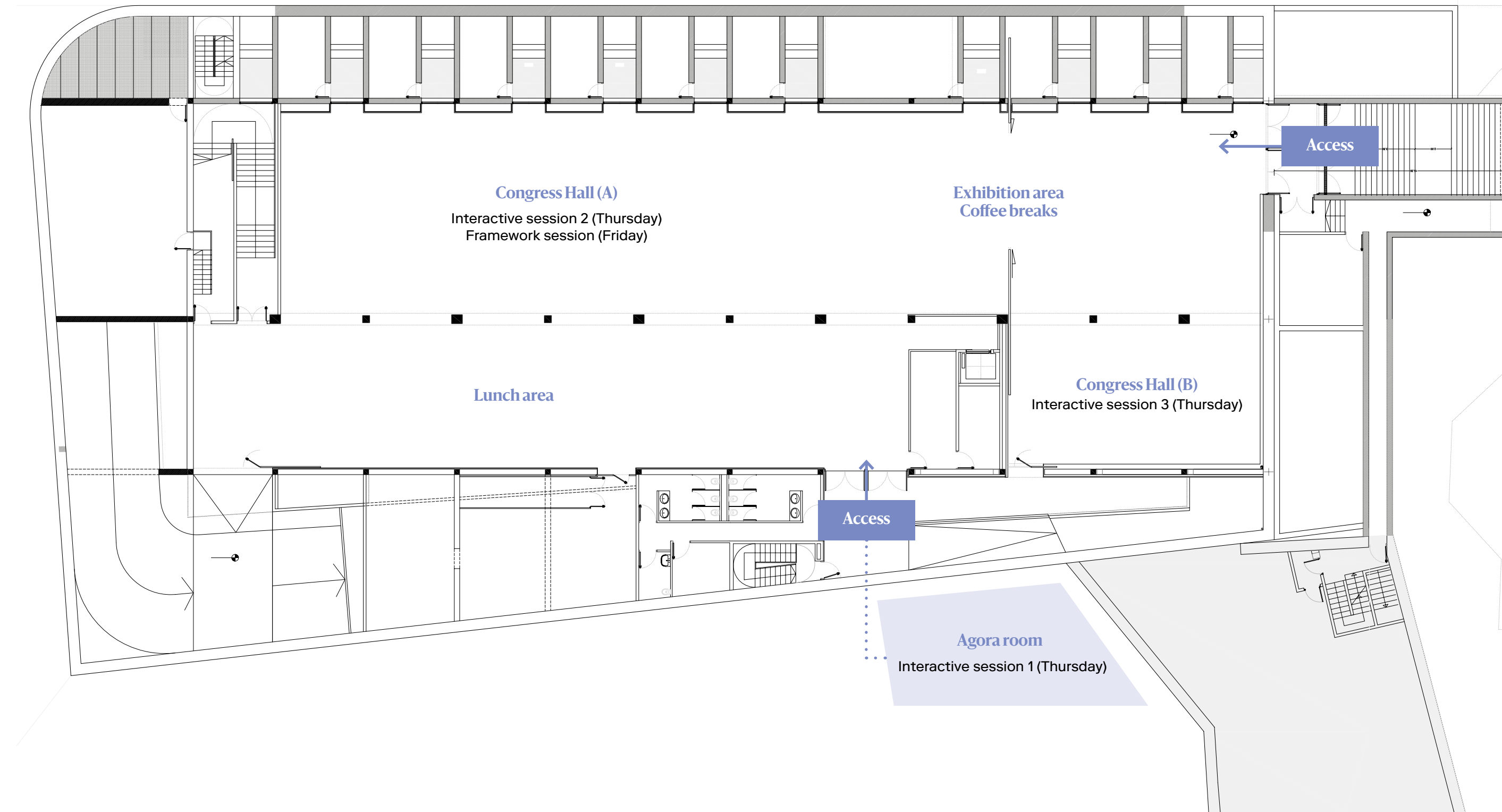
- > La Salle Campus map
- > Congress Hall plan
- > Restaurants

C/ Sant Joan de La Salle, 42  
08022 Barcelona

C/ Sant Joan de La Salle, 42  
08022 Barcelona



# Congress Hall plan





Restaurants

20:30  
Thursday, 16 May 2024  
Asador de Aranda

Av. del Tibidabo, 31  
08022 Barcelona



20:30  
Friday, 17 May 2024  
Mussol Casp

C/ de Casp, 19  
08010 Barcelona



# Submissions

- > Scientific committee
- > Abstracts and papers
- > Visual essays

## Scientific committee

Every submitted extended abstract and visual essay underwent review by two members of the scientific committee listed below.

**Gojko Bezovan**

Institute for Social Policy-ISP, University of Zagreb, Croatia

**Anthony Boanada-Fuchs**

Institute of Management, University of St. Gallen, Switzerland

**Nadia Charalambous**

Department of Architecture, University of Cyprus

**Adriana Diaconu**

Pacte - Laboratoire de sciences sociales, Université Grenoble Alpes, France

**Jennifer Duyne Barenstein**

ETH Wohnforum – ETH CASE, Switzerland

**Marja Elsinga**

Faculty of Architecture and the Built Environment, TU Delft

**Karim Hadjri**

School of Architecture, University of Sheffield, UK

**Martin Lux**

Institute of Sociology, Czech Academy of Sciences

**Fabián López**

Universitat Politècnica de Catalunya · BarcelonaTech (UPC), Spain

**Leandro Madrazo**

School of Architecture La Salle, Ramon Llull University, Barcelona, Spain

**Alexandra Paio**

School of Technology and Architecture, University Institute of Lisbon (ISCTE), Portugal

**Montserrat Pareja-Eastaway**

Department of Economics, University of Barcelona, Spain

**Ashraf Salama**

Department of Architecture and the Built Environment, Northumbria University, UK

**Bruno Sauer**

Green Building Council, Spain

**Kath Scanlon**

London School of Economics, UK

**Carla Sentieri**

School of Architecture, Universitat Politècnica de València, Spain

**Ana Vaz Milheiro**

DINÂMIA'CET-ISCTE - Centre for Socioeconomic Change and Territorial Studies (ECSH), Portugal

## Abstracts and papers

### Exploring the building blocks of sustainable social housing frameworks

Mahmoud Alsaeed, Karim Hadjri and Krzysztof Nawratek, School of Architecture, The University of Sheffield, Sheffield, UK

### Fostering sustainable renovation: Enhancing building Renovation Passport through large-scale retrofitting evaluation

Adirane Calvo, Álvaro Sicilia, and Leandro Madrazo, School of Architecture La Salle, Barcelona, Spain

### Planning proposal for the future of traditional Sille houses in the context of sustainable historical fabric using the shape grammar method

Ebru Erdogan, Abdullah Erdogan and Ş. Didem Boztepe Erkiş, Selcuk University, Faculty of Architecture and Design, Department of Architecture, Konya, Turkey

### Social housing retrofit: Case studies in resident engagement

Saskia Furman, Anna Martínez Duran, and Xavier Martín Tost, School of Architecture La Salle, Barcelona, Spain

### Improving housing affordability through housing allowances: A pilot project in Croatia

Marko Horvat, University of Zagreb, Faculty of Law, Study Centre for Social Policy, Zagreb, Croatia

### Spectrum thinking for an equitable housing landscape

Margaux Lespagnard, Waldo Galle, and Niels De Temmerman, Vrije Universiteit Brussel (VUB), Brussels, Belgium

### Socio-spatiality as a methodological lens. An empirical investigation of the socio-spatial potential of passive cooling building elements in the contemporary social mass housing in India

Aboli Mangire, HafenCity University Hamburg

### Clientelism and infrastructural gaps in Southern Europe: the implications on housing and urban governance

Andreas Panagidis and Effrosyni Roussou, Department of Architecture, University of Cyprus, Cyprus

## Visual essays

### Unfulfilled promises and unintended permanence: An evaluation of the Temporary Relocation Areas (TRA) in Stjwetla, Johannesburg, South Africa

Newsha Salari, School of Architecture La Salle, Barcelona, Spain

### Key themes and challenges for creating community-led, inclusive and sustainable housing: Barcelona's grant-of-use cooperative housing

Zoe Tzika, Carla Sentieri, Adrienne Csizmady and Anna Martínez, Universitat Politècnica de València, Spain

### A simulation model of the negotiations on affordable housing in England

Aya Badawy and Nuno Pinto, Alexandria University, The University of Manchester

### Opportunities and limits: The spatial sustainability of apartment buildings in Buda, built in the 1970s

Noémi Gyárfás, Budapest University of Technology and Economics, Department of Residential Building Design

### Is there life between buildings? Observing the potential of terrain vague for fostering sustainable living

Lorenzo Stefano Iannizzotto and Alexandra Paio, ISCTE-IUL Lisbon

### Regenerating the San Valentino neighborhood: A research by design for the quality of living spaces

Fabio Lepratto and Giuliana Miglierina, Politecnico di Milano

### An experiment for affordable design

Farishtay Zaidi and Zohaib Zuby, Institute of Architects Pakistan

## Notes





[www.re-dwell.eu](http://www.re-dwell.eu)  
[info@re-dwell.eu](mailto:info@re-dwell.eu)