



Zoe Tzika

B7 - School of Architecture, Universitat Politècnica de València

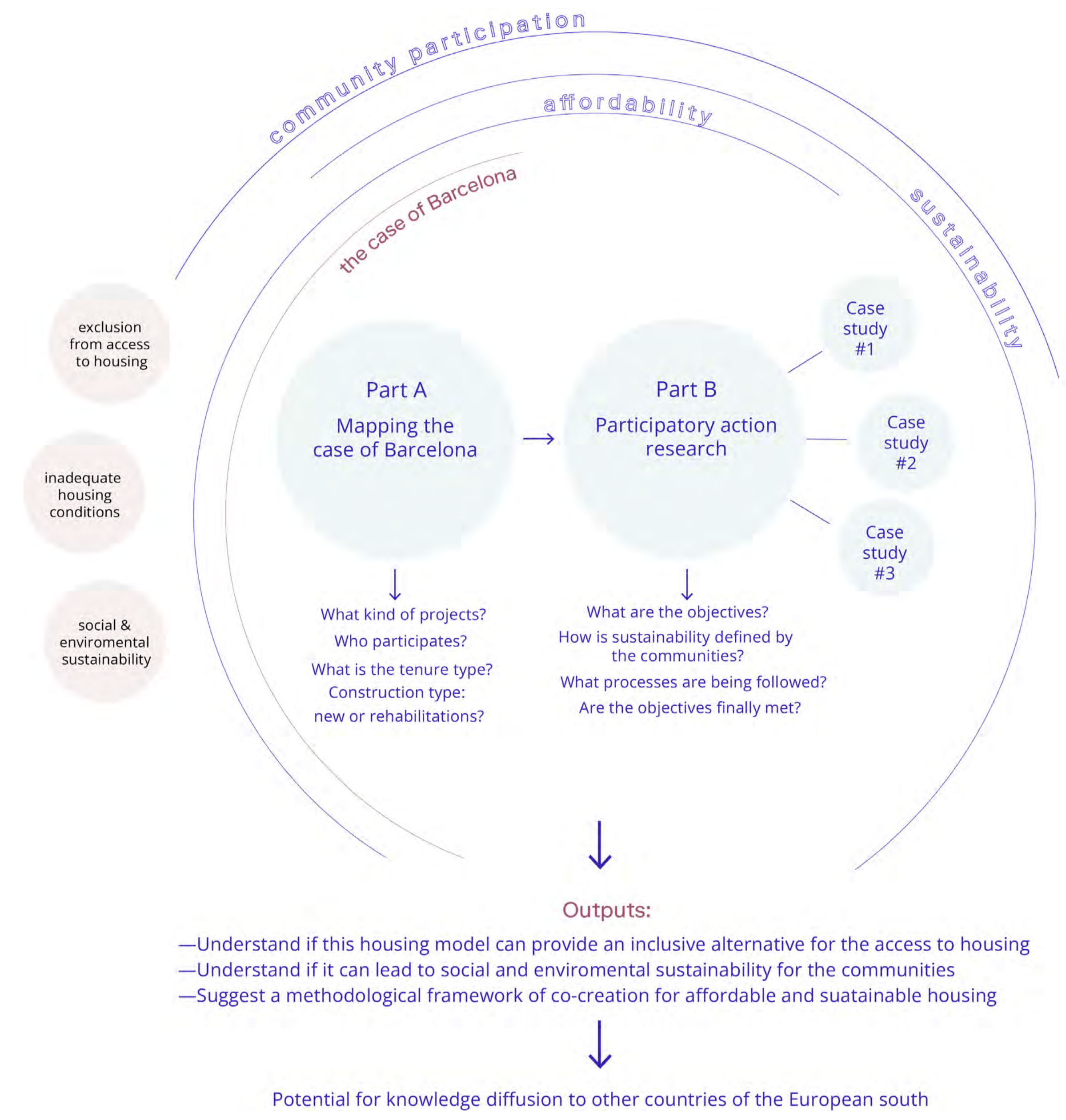
Supervising team

Carla Sentieri (Supervisor)
Adrienne Csizmady (Co-Supervisor)
Anna Martínez (Co-Supervisor)

ESR 10

An analysis of community participation for the provision of affordable and sustainable housing: The case of Barcelona

The research aims to investigate processes of community participation in housing provision, as an emerging practice, that seeks solutions to the housing crisis and more sustainable practices. The focus will be on the case of Barcelona, where during the last fifteen years, local groups are exploring alternative paths of housing co-creation as a response to the housing crisis. We will be focusing on cooperative housing that uses the legal form of 'grant of use', and that is following a transdisciplinary co-creation process.



IA · SUMMER SCHOOL NICOSIA · SUMMER SCHOOL NICOSIA · SUMMER SCHOOL NICOSIA

MEETING WITH LOCAL ACTORS

“This served to highlight the importance of knowing what the end-user needs are in the design process in housing, which is one of the key issues being explored by the RE-DWELL network.”



Case studies

Library of documented and collaboratively studied cases on affordable and sustainable housing

La Borda.



Blog

Network members activities



Community participation in the provision of affordable and sustainable housing | discussing inclusion/exclusion

WORKSHOPS, REFLECTIONS

Posted on 05-04-2022

The third RE-DWELL network-wide activity took place in Budapest, at the Centre for Social Science...

Author: Z.Tzika (ESR10)

Read more ->

Vocabulary

Terms and definitions on affordable and sustainable housing

Housing Retrofit

Area: Design, planning and building
Buildings are responsible for approximately 40% of energy consumption and 36% of carbon emissions in the EU (European Commission, 2021). Environmental retrofit, green retrofit or low carbon retrofits of existing homes aim to upgrade housing infrastructure, increase energy efficiency...

Created on 16-02-2022
Author: S.Furman (ESR2), Z.Tzika (ESR10), A.Fernandez (ESR12)

Read more ->

Vocabulary

Terms and definitions on affordable and sustainable housing

Community empowerment

Area: Community participation
Community empowerment appears in the literature of participatory action research (Minkler, 2004), participatory planning (Jo & Nabatchi, 2018), and community development (Luttrell et al., 2009) as a key element of participatory practices, understanding it as a process that...

Created on 03-06-2022
Author: Z.Tzika (ESR10)

Read more ->

“It is widely acknowledged that environmental retrofit should result in a reduction of carbon emissions by at least 60% in order to stabilise atmospheric carbon concentration and mitigate climate change (Fawcett, 2014; Johnston et al., 2005).”





Tijn Croon

B8 - Faculty of Architecture and the Built Environment (ABE), TU Delft

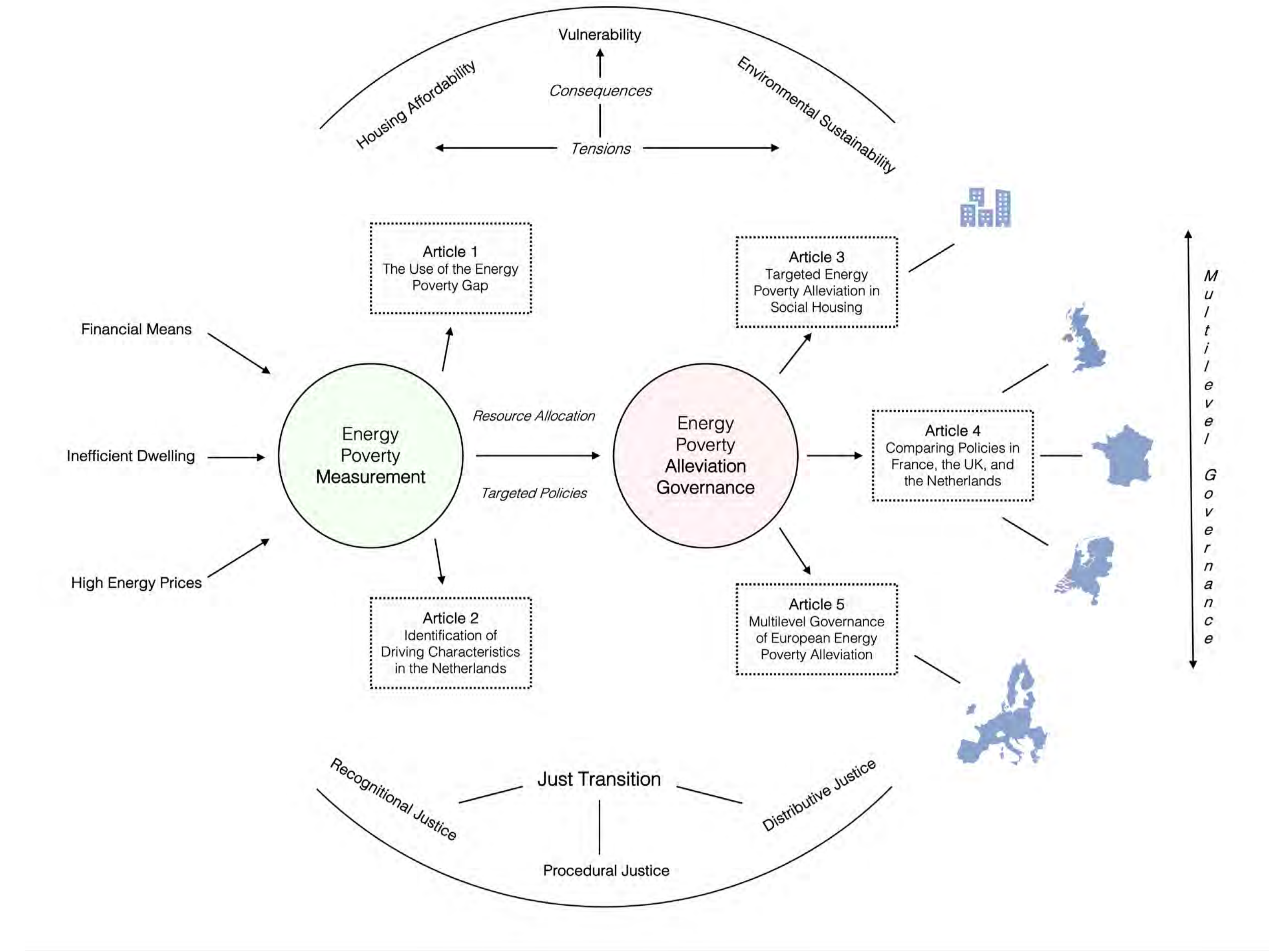
Supervising team

Marja Elsinga (Supervisor)
Adrienne Csizmady (Co-Supervisor)
Joris Hoekstra (Co-Supervisor)

ESR 11

The Governance of Energy Poverty Alleviation: Comparative Analyses of Targeted Policies and Strategies across Europe

This project explores opportunities for European policy-makers and housing professionals to target households at risk of energy poverty so that the Renovation Wave can be transformed into a 'just transition'.

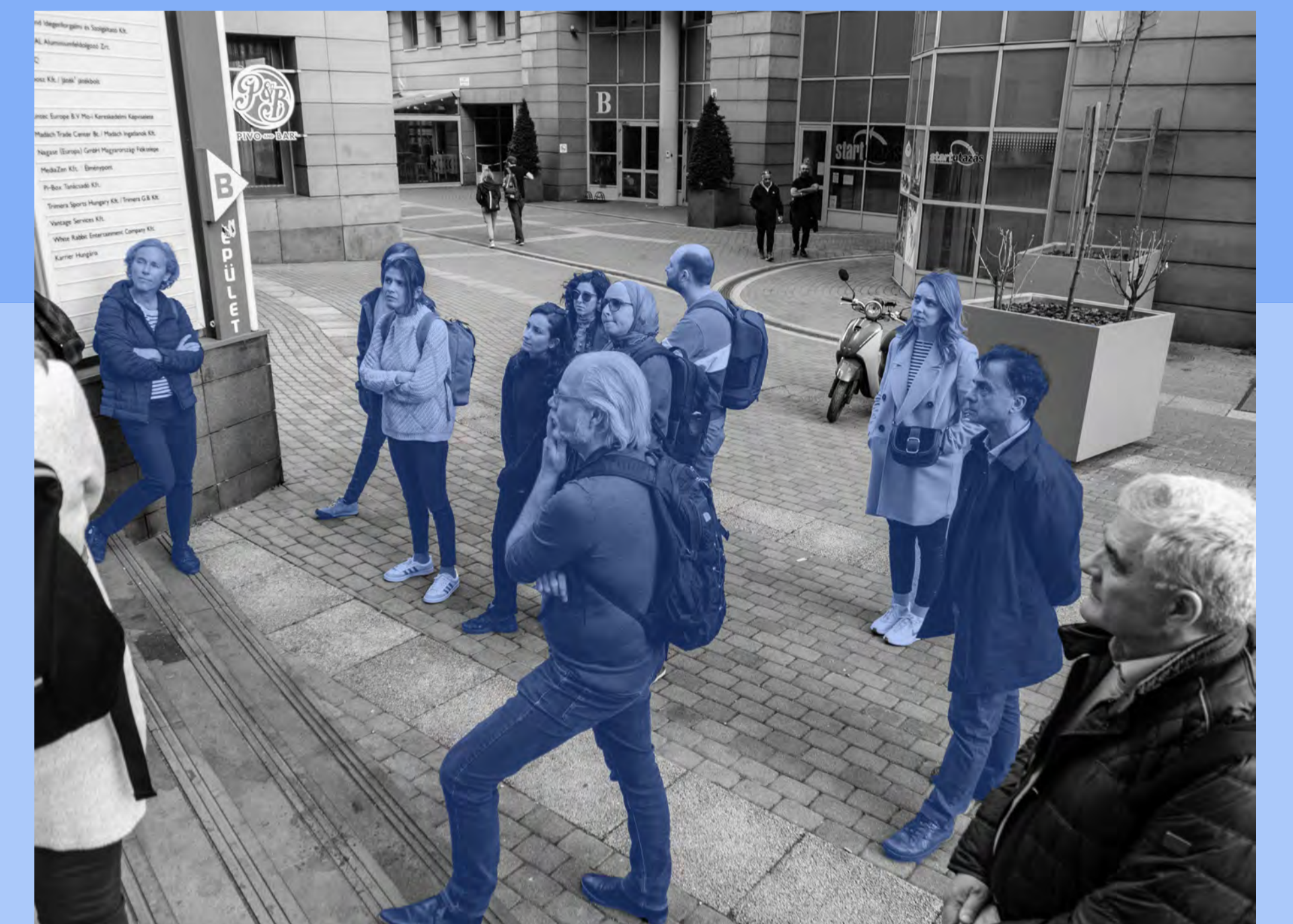


WOKRSHOP BUDAPEST · WOKRSHOP BUDAPEST · WOKRSHOP BUDAPEST · WOKRSHOP BUDAPEST

“The third RE-DWELL network-wide activity took place in Budapest, at the Centre for Social Sciences. Each one of the network activities falls under a specific thematic, indicating where the focus of each of our common activities would be.

The first two - the Lisbon workshop and the Nicosia summer school-, were revolving around the area of 'design, planning, and building' while the next two - Budapest's workshop and the upcoming Valencia summer school- will focus on 'community participation'.

SITE VISITS



“I genuinely believe the RE-DWELL community is in a unique position to contribute to a better understanding of the way forward, because messy and complex real-world problems call for a holistic approach.”

Blog

Network members activities

Blog entry: Bridging research and practice during secondment at Clarion. Posted on 08-04-2022. Author: T.Croon (ESR11).

Blog entry: Lisbon as an all-round learning experience. Posted on 29-09-2021. Author: T.Croon (ESR11).

Blog entry: Greater than the sum of its parts. Posted on 21-07-2021. Author: T.Croon (ESR11).

Vocabulary

Terms and definitions on affordable and sustainable housing

Housing Governance

Area: Policy and financing
The shift from 'government' to 'governance' has been debated since the early 1970s.

Read more ->

Vocabulary

Terms and definitions on affordable and sustainable housing

Just Transition

Area: Policy and financing
Justice theory is as old as philosophical thought itself, but the contemporary debate often departs from the Rawlsian understanding of justice.

Read more ->





Androniki Pappa

B9 - School of Technology and Architecture, University Institute of Lisbon

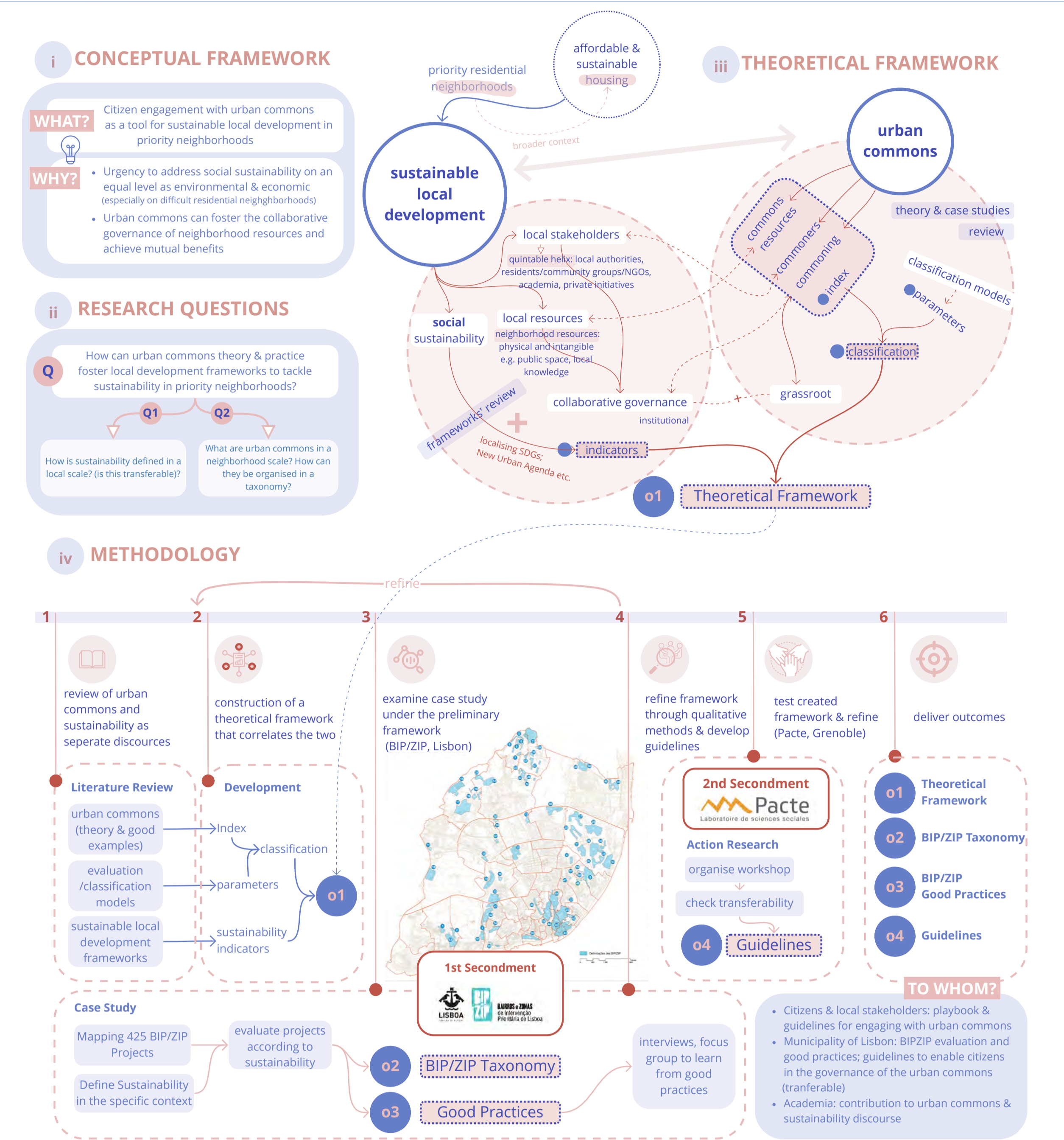
Supervising team

Alexandra Paio (Supervisor)
Paulette Duarte (Co-Supervisor)
Carla Sentieri (Co-Supervisor)

ESR13

Urban commons for Sustainable Local Development in priority neighbourhoods

The aim of this research is to investigate how the notion of urban commons can influence Sustainable Local Development (SLD) strategies to fortify social and territorial impact in priority residential neighbourhoods. Following a transdisciplinary research methodology, the study explores a. a conceptual and visual scheme to represent urban commons in the neighbourhood that includes resources, people - institutions and social practices, as well as indicators and research tools to assess their impact; b. a definition of SLD with influential parameters and indicators to measure its impact and identification of transferable aspects; and c. a combined framework from a and b. The research initiates with exploring the BIPZIP Program in Lisbon from an urban commons perspective and further focuses on the European context.



SHOP BUDAPEST · WOKRSHOP BUDAPEST · WOKRSHOP BUDAPEST · WOKRSHOP BUDAPEST ·

“We participated in a roundtable about **“Community participation in the provision of affordable and sustainable housing”** with experts from the field, Jenny Pickerill, professor of environmental geography and head of the department of geography at the University of Sheffield, and Richard Lang, professor of social enterprise and innovative regions at Bertha von Suttner University in Austria”.



LECTURES



“Most significantly, it acted as a threshold, establishing the transition from the individual to the collective, providing the invaluable feeling that no one will be alone within this demanding yet exciting journey.”

Blog

Network members activities



Threshold

Posted on 18-07-2021

Through the juxtaposition of things that were not normally found together, new irruptive truths are...

Author: A.Pappa (ESR13)

WORKSHOPS

[Read more ->](#)

Vocabulary

Terms and definitions on affordable and sustainable housing

Participatory approaches

Area: Community participation

According to the Oxford English Dictionary, participation is “the act of taking part in an activity or event”. Likewise, it can also mean “the fact of sharing or the act of receiving or having a part of something.” It derives from old French participation which in turn comes from late Latin...

Created on 17-02-2022

Author: M.Atsaeed (ESR5), L.Ricourte (ESR15), A.Pappa (ESR13)

[Read more ->](#)





Carolina Martín

B9 - School of Technology and Architecture, University Institute of Lisbon

Supervising team

Alexandra Paio (Supervisor)

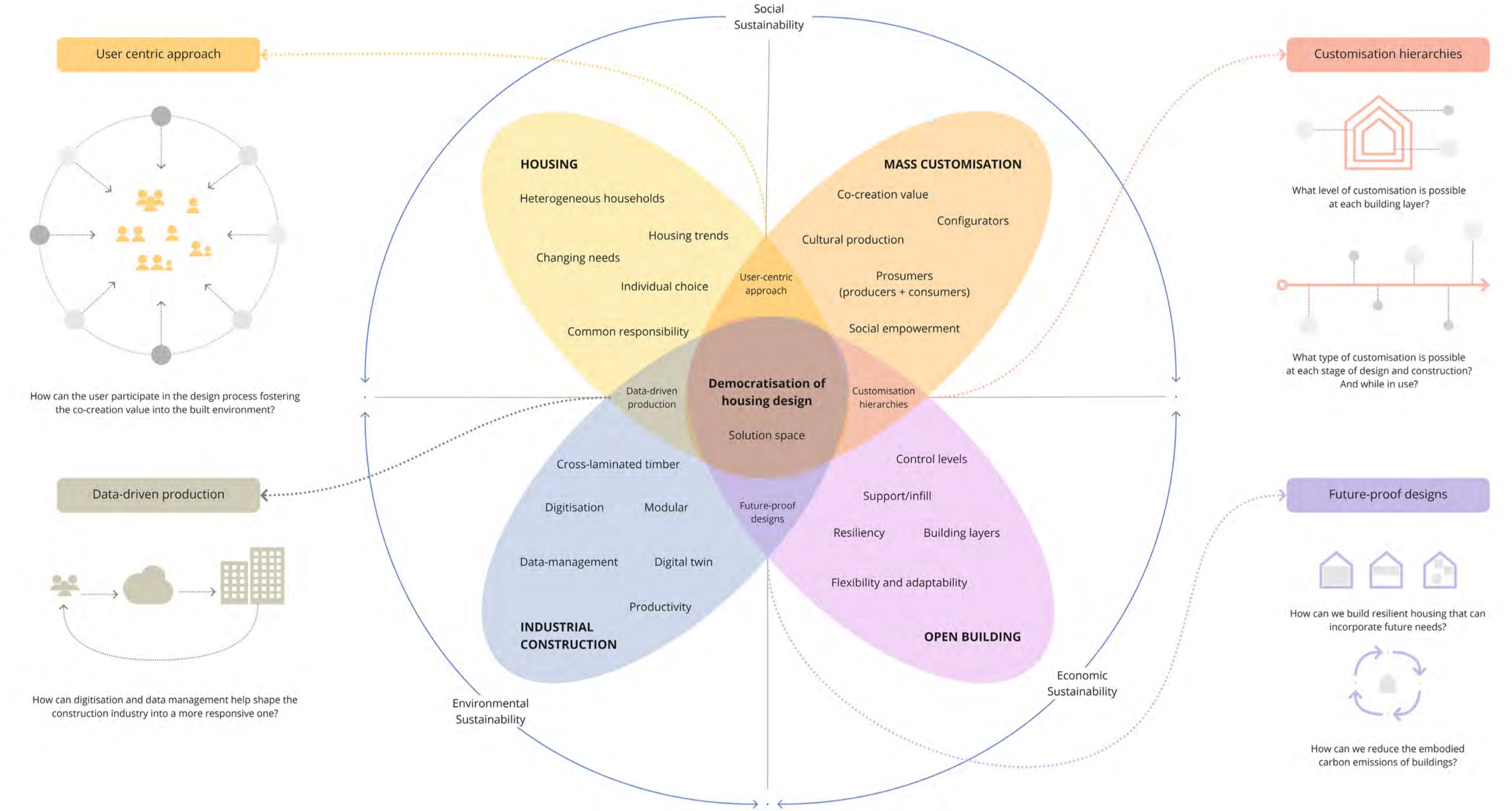
Núria Martí (Co-Supervisor)

Carla Sentieri (Co-Supervisor)

ESR 14

Democratising housing design through Mass Customisation

This project will investigate the implementation of MC in the housebuilding industry through a transdisciplinary approach, using industrial and sustainable building methods and incorporating ICTs such as BIM. The research will select three case studies from the European context that have been completed with different levels of industrialisation. Through a cross-case study comparative method, it will evaluate to what extent the systems have an impact on the customisation possibilities, the role of the diverse actors in the construction process, and the implications on optimisation and scalability.



WOKRSHOP BUDAPEST · WOKRSHOP BUDAPEST · WOKRSHOP BUDAPEST · WOKRSHOP BUDAPEST

“We encounter two broad categories for the creation of cooperative housing; the first refers to **self-initiated groups** that make decisions based on consensus, adopting often self-built approaches.”

GROUP DISCUSSIONS



“The second category refers to the promotion of cooperative housing that is being **intermediated by organisations**, such as housing or non-profit associations.”



“This case study proves that true value of participation lies in the effects it creates in its participants. The same living spaces when seen from different eyes at different situations, resulted in unique arrangements and acquired different significance.”

Blog

Network members activities



Rebuild 2022 Madrid | The foundations are set for a promising construction industry

CONFERENCES

Posted on 03-05-2022

In a rapidly changing world where the world's urban population is increasing by 200,000 people per da...

Author: C.Martín (ESR14)

[Read more →](#)

Case studies

Library of documented and collaboratively studied cases on affordable and sustainable housing

Diagoon Houses





Leonardo Ricaurte

B10 - School of Built Environment, University of Reading

Supervising team

Flora Samuel (Supervisor)

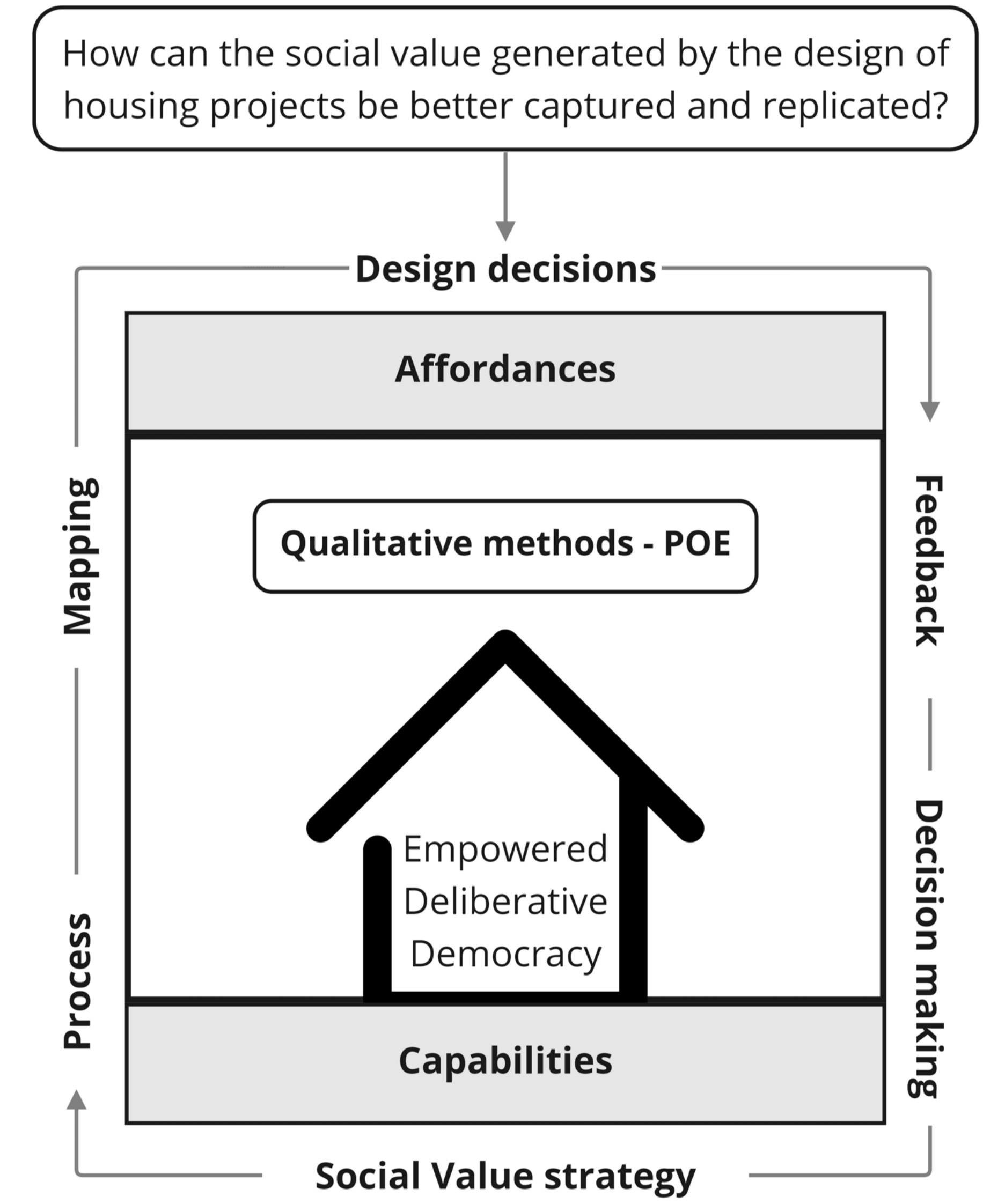
Lorraine Farrelly (Co-Supervisor)

Jean-Cristophe Dissart (Co-Supervisor)

ESR 15

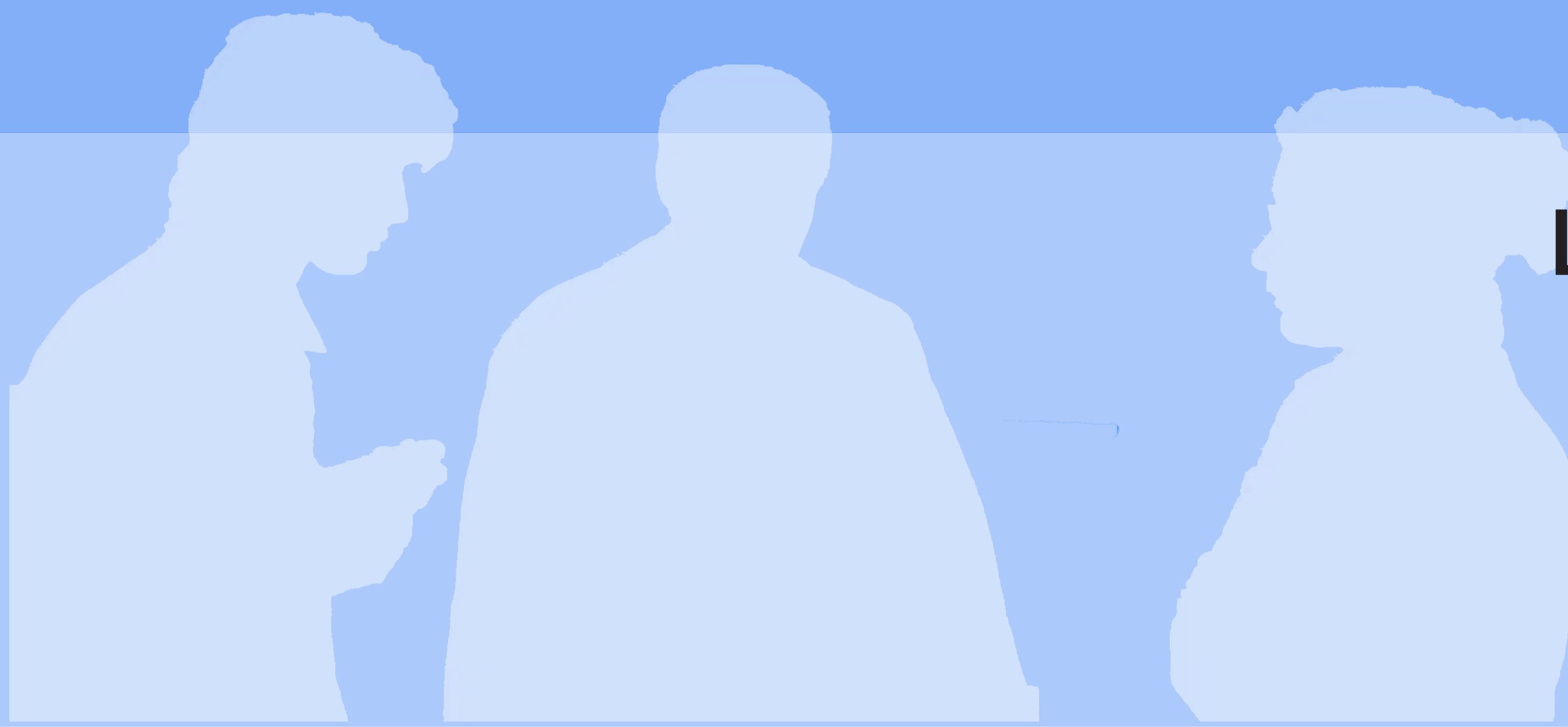
Capturing the social value of design in housing regeneration projects: *The potential of POE and learning loops in the built environment*

This project aims to develop a framework for capturing the social value of housing at a building scale. Post-occupancy evaluation (POE) is a promising methodology to gauge a project's capacity to meet social impact objectives and deliver improved sustainability and affordability. When it comes to housing, a decision on the height of a bench in a common space, the position of windows in relation to a playground or the size of a stairwell can impact the social value of a project. This thesis seeks to align the potential of the 'Capability approach' of Amartya Sen with debates on social value at the scale of a housing block; likewise, to complement the body of knowledge devoted to understanding how buildings work but bringing forward the human scale.



WOKRSHOP BUDAPEST · WOKRSHOP BUDAPEST · WOKRSHOP BUDAPEST · WOKRSHOP BUDAPEST · WOKRSHOP BUDAPEST · WOKRSHOP BUDAPEST

“The term **reflexivity** was often mentioned in the discussion, referring to collective practices of self-reflection about the participants' positionalities, authorities, verbalisation skills, experience, and values.



LECTURES

“Participation in design or participatory design is a process and strategy that entails all stakeholders (e.g. partners, citizens, and end-users) partaking in the design process.”

Blog

Network members activities



Decoding 'new' housing paradigms

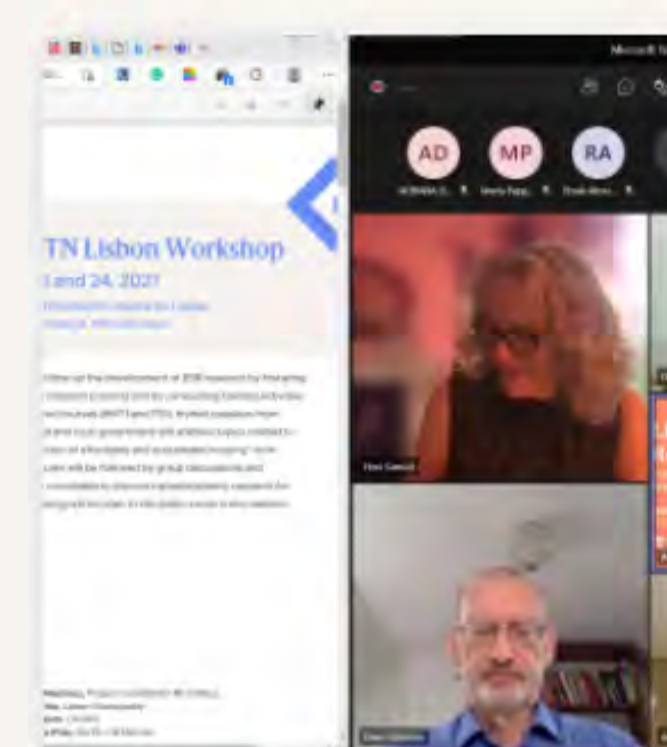
REFLECTIONS

Posted on 13-01-2022

Several attempts to elicit guidelines that holistically respond to the issue of understanding and creatin...

Author: L.Ricaurte (ESR15)

[Read more →](#)



Chega de Saudade, see you next time!

WORKSHOPS

Posted on 29-09-2021

The RE-DWELL Lisbon workshop was a particularly challenging experience for me. It was the very first...

Author: L.Ricaurte (ESR15)

[Read more →](#)



New beginnings: paving the way towards sustainable and affordable housing for all

WORKSHOPS

Posted on 19-07-2021

Contemporary times have shown us that telecommuting is something that is here to stay,...

Author: L.Ricaurte (ESR15)

[Read more →](#)

Vocabulary

Terms and definitions on affordable and sustainable housing

Participatory approaches

Area: Community participation

According to the Oxford English Dictionary, participation is "the act of taking part in an activity or event". Likewise, it can also mean "the fact of sharing or the act of receiving or having a part of something." It derives from old French participation which in turn comes from late Latin...

Created on 17-02-2022

Author: M.Alsaeed (ESR5), L.Ricaurte (ESR15), A.Pappa (ESR13)

[Read more →](#)

Vocabulary

Terms and definitions on affordable and sustainable housing

Affordability

Area: Design, planning and building

Affordability is defined as the state of being cheap enough for people to be able to buy (Combley, 2011). Applied to housing, affordability, housing unaffordability and the mounting housing affordability crisis, are concepts that have come to the fore, especially in the contexts of free-...

Created on 03-06-2022

Author: L.Ricaurte (ESR15)

[Read more →](#)

